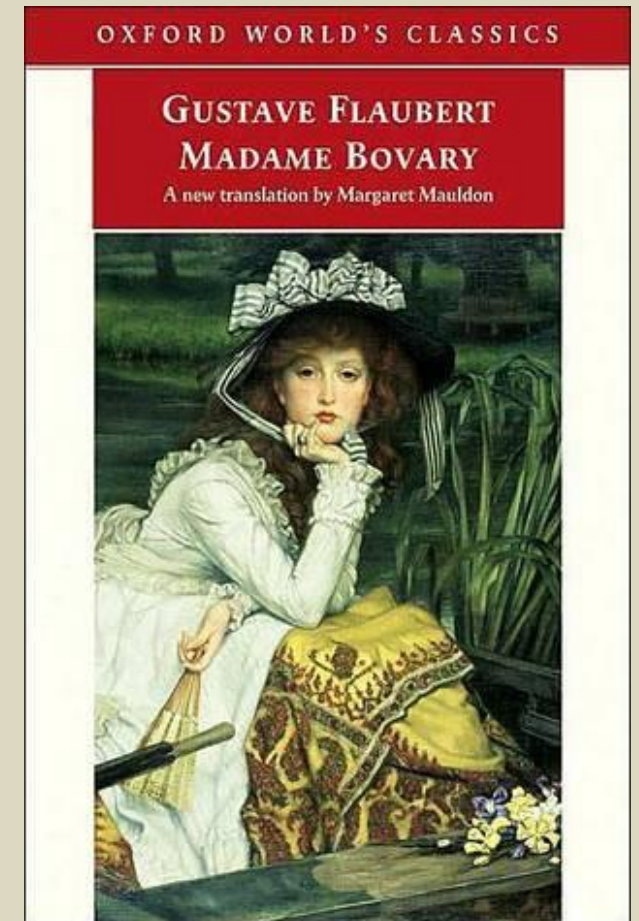


*Madame Bovary - Gustave Flaubert
(1857)*

*Titre original : Madame Bovary, Mœurs de
Province*

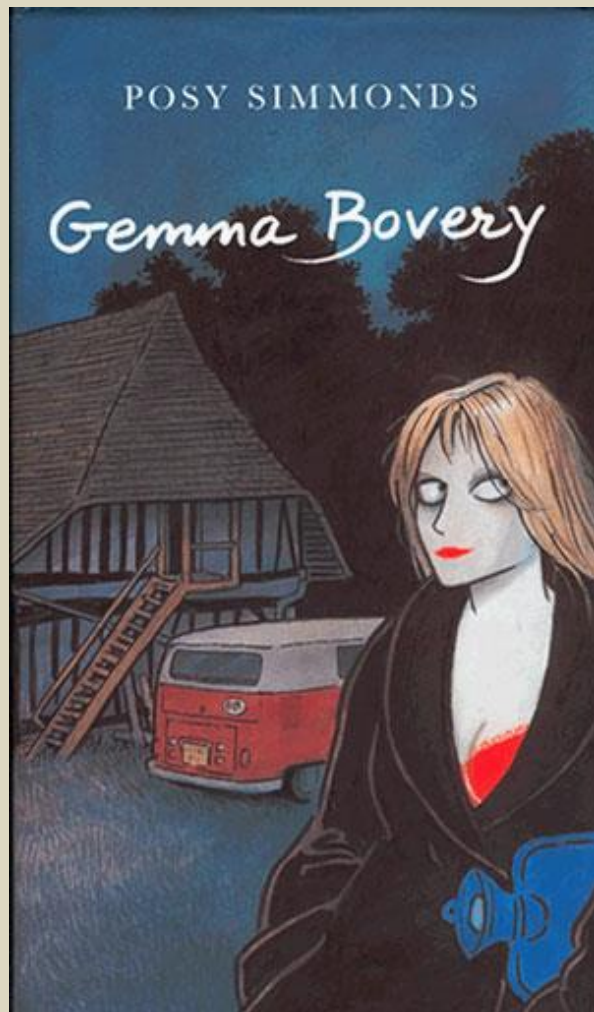


'Madame Bovary' a été adapté trois fois au cinéma :

- ❖ 1933 : Jean Renoir
- ❖ 1940 : Vincente Minelli
- ❖ 1991 : Claude Chabrol

Le roman [graphique](#)





(1999)

According to Gemma's diary "Affairs are absolutely O.K. as long as you don't get involved and you're really discreet." Discreet, she and Hervé were. Probably I was the only person to know how often he came to Bailleville. When one walked by the chateau one saw his car parked sometimes for days at a time. To my eyes of course, Gemma had adultery written all over her. It wasn't just the extra care she took with her appearance. To be even slightly in range was to find her irresistible. One couldn't help it. It was to feel the heat-seeking eyes, the smile, full beam, it was to feel oneself entering a particle storm of pheromones.



How can an affair be bad when it makes me feel so good? When it makes me want to make everyone feel good - esp. Charlie? I really get on with him these days I feel good, so he feels good so I feel even better. Funny how love rubs off.

REVIEW OF THE GRAPHIC NOVEL

ARTICLE in the *GUARDIAN*

POSY SIMMONDS - BIOGRAPHY



Posy Simmonds was born in 1945.
She grew up in Berkshire.

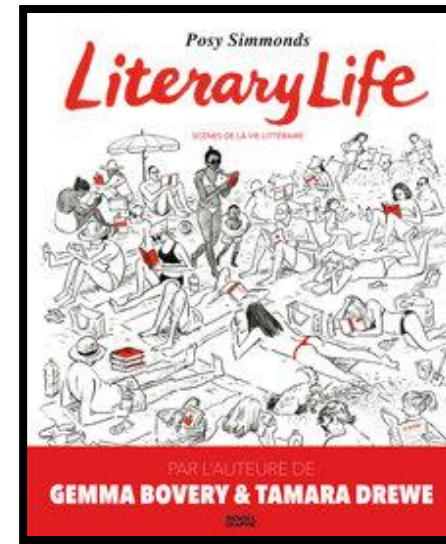
She studied Graphic Design at the Central School of Art in London. In 1969, she started her first daily cartoon feature 'Bear' in *The Sun*, and also contributed to a variety of magazines and journals, including *The Times* and *Cosmopolitan*.

She is renowned for her light, witty satire, and social observation. In 1972, she moved to *The Guardian* as illustrator, where she created a popular cartoon strip about middle-class couple, George and Wendy Weber. During this time she also produced graphic novels, including *True Love* (1981), and *Gemma Boverly* (1999), an adult reworking of Flaubert's *Madame Bovary*. She was named 'Cartoonist of the Year' in 1980 and 1981.

In 1987, she began to write and illustrate children's books, and created *Lulu and the Flying Babies* (1988) and the very popular *Fred* (1987), the film version of which was nominated for an Oscar.

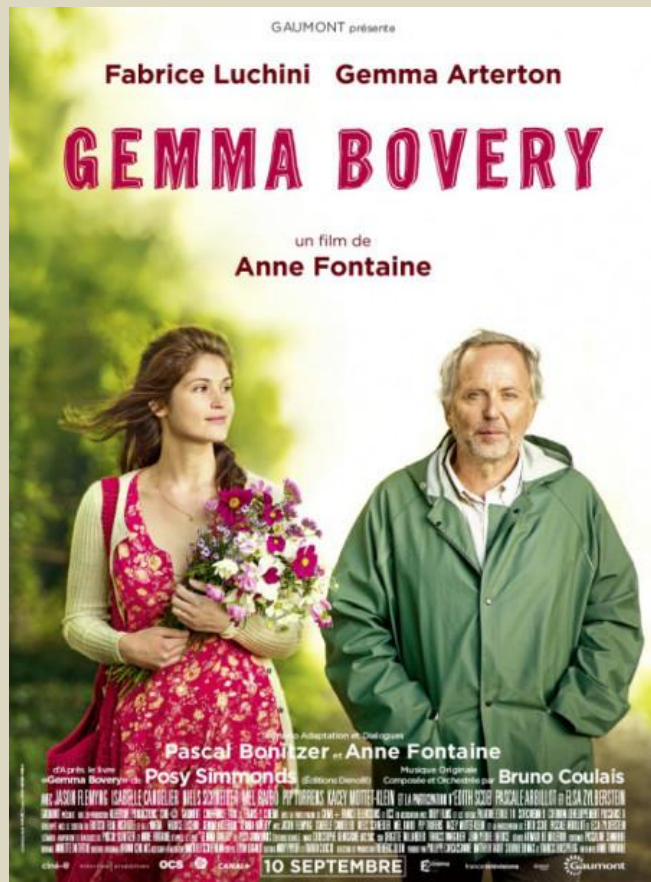
Her most recent books are *Baker Cat* (2004), a book for children, and *Literary Life* (2003). *Tamara Drewe*, a book inspired by Thomas Hardy's *Far From The Madding Crowd*, was published in 2007.

<http://literature.britishcouncil.org/posy-simmonds>



In *Literary Life* (2003), her targets share the trials and tribulations of the world of books, as observed in authors, publishers, booksellers and readers. These cartoons and strips typically show women writers juggling the demands of work and family, or typing their frustrations into laptops. Male writers test their egos at readings and book-signings and are forever flirting. The cover drawing, for instance, shows a middle-aged man with his arm almost around a young waitress. Looking inside, we find the caption: 'You know, you're really beautiful ... Have you ever thought about being a novelist?' And we see its context, the launch of a book titled *Love Rats*. By contrast, Jane Austen finds herself under modern media pressures: 'You're a celebrity ... get yourself over here!' And the Harry Potter craze is sent up in a drawing of a family's fixed smiles as a young girl explains the plot of the latest book. Two graphic short stories conclude the collection. 'Murder at Matebele Mansions' is a spoof murder mystery, while 'Cinderella' sees an elderly couple restored to youth by their fairy god-daughter (who looks rather like Lulu) so they can attend a party given by the awful owners of their care home.

<http://literature.britishcouncil.org/posy-simmonds>



Martin est un ex-bobo parisien, reconverti plus ou moins volontairement en boulanger d'un village normand. De ses ambitions de jeunesse, il lui reste une forte capacité d'imagination, et une passion toujours vive pour la grande littérature, celle de Gustave Flaubert en particulier. On devine son émoi lorsqu'un couple d'Anglais, aux noms étrangement familiers, vient s'installer dans une ferme du voisinage. Non seulement les nouveaux venus s'appellent Gemma et Charles Boverly, mais encore leurs comportements semblent inspirés par les héros de Flaubert. Pour le créateur qui sommeille en Martin, l'occasion est trop belle de pétrir - outre sa farine quotidienne - le destin de personnages en chair et en os. Mais la jolie Gemma Boverly, elle, n'a pas lu les classiques, et entend bien vivre sa propre vie...

Adaptation du roman graphique de Posy Simmonds

<http://www.premiere.fr/film/Gemma-Boverly-3821514>

BANDE ANNONCE

<http://bit.ly/1up4qit>

SORTIE

le 10 septembre 2014